

# QUICKBOLT™ TOWERS & CATWALKS



**PROVEN & DEPENDABLE™**

[WWW.GRAINSYSTEMS.COM](http://WWW.GRAINSYSTEMS.COM)

# PROVEN & DEPENDABLE

Your customers depend on you to be there when they need to move their grain from field to market all year-round. Downtime is not an option. You need proven, dependable solutions that maximize productivity and efficiency.

It's this dedication that drives GSI to strive continuously to create reliable products that stand the test of time. Years of hard work powered by a single vision to design and deliver world-class products have built this company from the ground up. For more than 40 years, it is this commitment and focus that has resulted in GSI becoming the world's number one manufacturer of grain bins and a leader in drying and material handling equipment. However, it is your dedication to agriculture that keeps us striving to create the best grain systems possible.

Never satisfied with the status quo, we are driven to provide top-of-the-line products that will protect, condition and move your grain. We are committed each and every day to provide the best service possible by establishing lasting relationships with customers, just like you who use our products through our worldwide network of dealers and contractors.

We're always growing, but we will never lose sight of the relationships that got us here in the first place. While our commitment to remain at the top runs deep, our commitment to you runs even deeper.

**THAT'S WHY GSI.**



## QUICKBOLT™ TOWERS & CATWALKS

### BUILT FOR WHAT'S NEXT

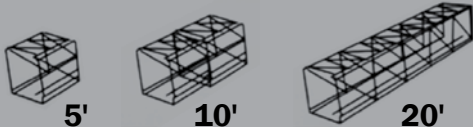

Agriculture is all about hard work and being smart with your time – get the job done right so you can move on to the next one. Your success depends on your new equipment being up and running on time to maximize your efficiency and profitability.

That's why we've gone back to the drawing board with towers and catwalks to create a totally new product that makes installation more intuitive so that dealers and contractors can complete projects faster. So we went through each step of the process to make it much easier to build by:

- Giving contractors less pieces and a simple design
- Adding alignment guides that make connections easier to bolt together
- Designing platforms that are mounted between tower sections to accelerate construction
- And significantly reducing the overall number of bolts needed to erect the structure

### ONE DESIGN, 2 PRODUCT LINES

GSI QuickBolt Towers & Catwalks comes in two different product lines – Engineer-to-Order and Configure-to-Order. The Engineer-to-Order product can be designed exactly to your specifications, and the Configure-to-Order product allows you to combine sections and platforms of various sizes in any order.

	CONFIGURE-TO-ORDER	ENGINEER-TO-ORDER
		
<b>Towers</b>	Standard footprint options Height 5' increments	Standard footprint options - Custom on request Height to request
<b>Platforms</b>	Standard platform 5' elevation increments	Customizable platform Elevation to request
<b>Stairs</b>	Standard Match lower height increments	Standard - multiple styles (expanded metal & bar grating) Height to request
<b>Catwalk</b>	Standard models Standard widths Length 5' increments Walk arounds available at 5' intervals Standard 2' walkway, full width grating	Standard models - custom upon request Standard widths - custom upon request Length to request Walk arounds to request Standard 2' walkway, full width grating, bar grating Mitered & angled ends available Custom openings available
<b>Bin Peak Support</b>	Standard to GSI bin Standard Height Easy connection to GSI bin Egress between catwalk & bin peak available	Standard to GSI bin Standard Height - custom upon request Easy connection to GSI bin Egress between catwalk & bin peak available
<b>Super Structures</b>	Standard footprint & clearances Easy connection to GSI bin	Standard footprint & clearances custom upon request Easy connection to GSI bin



# TOWER OVERVIEW

QuickBolt™ towers feature less bolts, fewer pieces and a time saving platform design for more efficient on-site assembly. Our unique industry leading design is available for bucket elevator support towers and catwalk support towers.

## Bucket Elevator Support Tower

Footprints: 8'-24' x 8'-24' in 2' increments

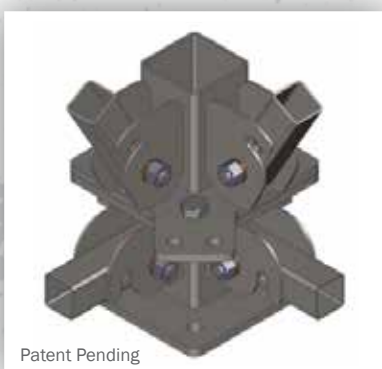
## Catwalk Support Tower

4-legged Tower Footprints: 4'-6' x 6'-14' and 8'-24' x 8'-24' in 2' increments

2-legged Tower Footprints: 6'-14' in 2' increments

## COLUMN TO STRUT AND DIAGONAL CONNECTION

New design requires fewer bolts, resulting in less time spent assembling, while still leading the industry in strength-to-weight ratios.



## TOWER STRUT TO DIAGONAL CONNECTION

Simple connections and alignment guides aid in the ease of field assembly.

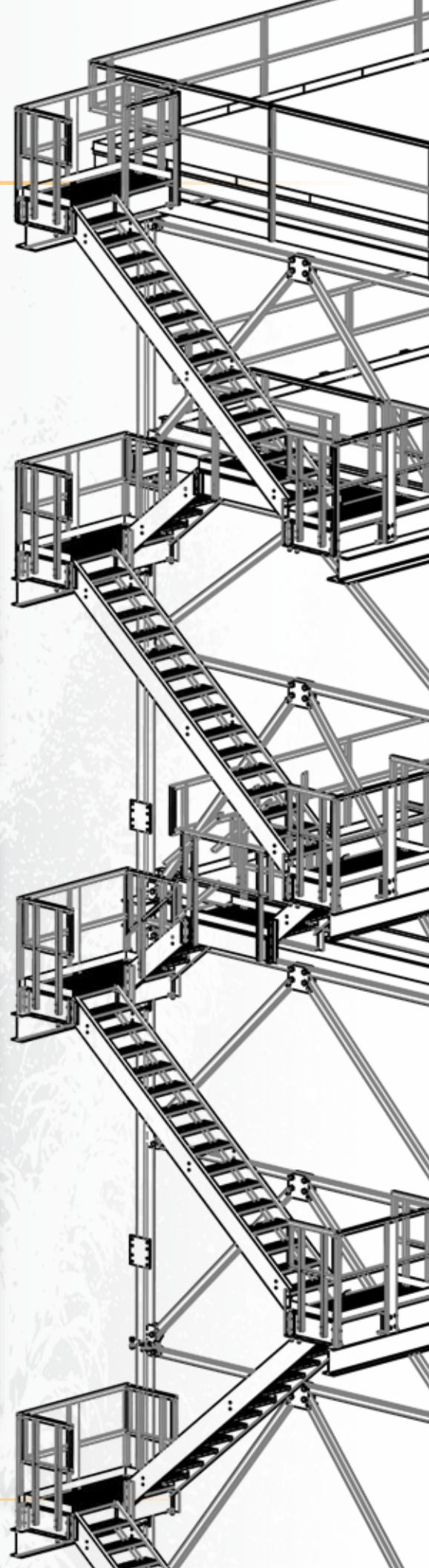
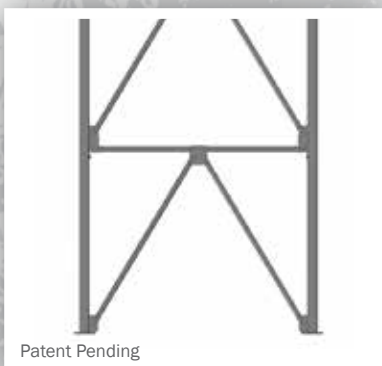


## CHEVRON-BRACING DESIGN

Allows for easy access when working around the tower.

## TUBE CONSTRUCTION

When combined with the Chevron-Bracing design, tube construction provides industry leading strength-to-weight ratios and allows utilization of single bolt connections. Significantly reducing the number of bolts required.





# TOWER OPTIONS

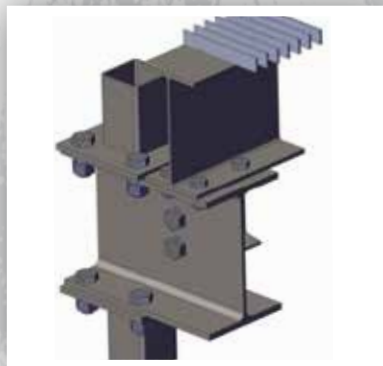
## CATWALK SUPPORT

Cantilever support beams limit interference between the catwalk and tower bracing. This reduces the complexity of connecting the bridge to the tower and eliminates the need for custom bracing.



## PLATFORMS

Platforms can be built as separate units and placed between tower sections. This allows the installer to build the platform separately and then place it between the tower sections up in the air. Platform beams stack on platform support beams, further simplifying platform assembly.



## STAIRS

Fast stack assembly process greatly reduces erection time and pre-welded stair support brackets give a precise and level fit with no clamping necessary.



PER 20' SECTION	PIECES	BOLTS
20' Tower Section Footprint: 8'-24' x 8'-24'	44	96
20' Tower Section Footprint: 4'-6' x 6'-14'	36	88

# CATWALK STYLES

QuickBolt™ Catwalks lead the industry with an innovative design, simplifying field assembly. Handrail or Walk-Thru trusses are available, and custom designed catwalks can be built with spans well over 200' – no matter what fits your operation, QuickBolt Catwalks will save you time in the field.

PER 20' SECTION	PIECES	BOLTS
20' Handrail Truss	18	56/58
20' Walk-Thru Truss	26	56

- Reduction of loose pieces
- Deflection limiting connections
- Simplified connection design
- Simple span trusses
- Greater span-to-weight ratios

## HANDRAIL TRUSS

Ideal for medium spans, open top eases field placement of conveyors while the truss is in the air.

Standard spans up to 140 feet.



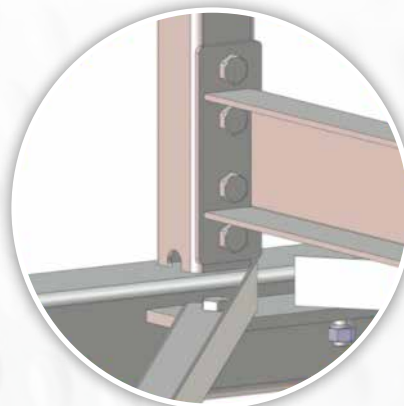
## WALK-THRU TRUSS

Ideal for longer spans and maximum loading requirements.

Standard spans up to 190 feet.

### CATWALK STRUT TO SIDE PANEL CONNECTION

Fewer pieces allow crews to assemble catwalks faster and minimize the complexity of sorting and keeping track of pieces at the job site.





# CATWALK OPTIONS

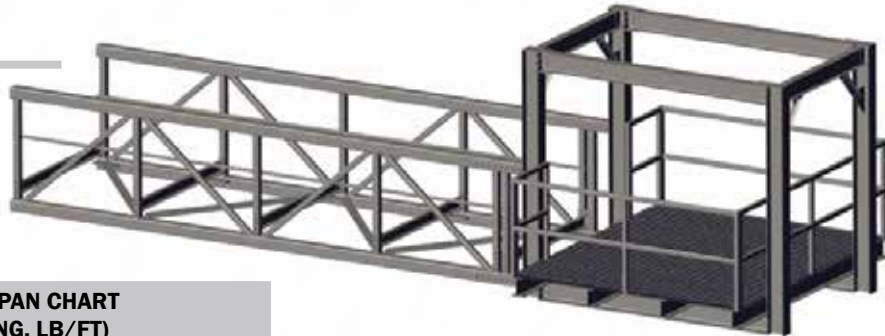
## WALK AROUND OPTIONS

Allow extra width for motors, drives, transitions and trippers.

MIDSPAN WALK AROUND



END SERVICE WALK AROUND



**HANDRAIL TRUSS SPAN CHART  
(CONVEYOR LOADING, LB/FT)**

SPAN (FT.)	HT60	HT80	HT120	HT170
35	435			
40	375			
45	290			
50	230			
55	180	490		
60	145	410		
65		335		
70		270		
75		230		
80		215	510	
85		165	455	
90			395	
95			330	
100			280	510
105			235	475
110			200	420
115			135	365
120				325
125				285
130				250
135				180
140				100

**WALK-THRU SPAN CHART  
(CONVEYOR LOADING, LB/FT)**

SPAN (FT.)	WT180	WT200	WT250
100	465		
110	410		
120	370	480	
130	315	430	
140	260	365	
150	150	280	510
160		100	450
170			380
180			260
190			210

# COMPLETE YOUR GSI SYSTEM

WWW.GRAINSYSTEMS.COM



## 40-SERIES™ GRAIN BIN

When determining the best system for your operation, we know that what's protected inside the bin is what counts the most. Each bin is efficiently designed to handle maximum loads for unmatched strength and all GSI bins are constructed using the highest Strength steel available.



## DRYING AND CONDITIONING

Today's farm and commercial operations have greatly varied needs for their drying solutions. Size, type and investment all play a part in the decision for which to use. GSI provides systems of every size and type to help with those needs. Options include TopDry, Portable, Modular, T-Series and Zimmerman Tower Dryers.



## MATERIAL HANDLING

With lines of GSI and InterSystems Material Handling, we offer the broadest product portfolio of proven and dependable equipment in the industry. We design and manufacture products that withstand the conditions of any commercial grain facility, while handling the grain with care and efficiency.



## GLOBAL SOLUTIONS. LOCAL SUPPORT.

GSI and GSI Dealers alike share the same passion and commitment to our customers. GSI Dealers and contractors understand down time is not an option, construction schedules must be met. From site planning to installation and service, GSI Dealers and contractors are the proven partners for your operation. When you buy GSI, you get the quality product of a worldwide leader and the dependable service of your local Dealership.

**TO FIND YOUR LOCAL GSI DEALER,  
VISIT THE GSI DEALER LOCATOR  
AT WWW.GRAINSYSTEMS.COM**



Copyright ©2014 All rights reserved.  
GSI reserves the right to change  
designs and specifications without notice.

**GS-201 MAR/15**